



***The BFM Consortium:
Objective, Structure, Governance, Participation***

Marco.Zavatarelli@Unibo.it

With

BFM

***Steering Committee and System Team
members***

BFM Release meeting, Bologna March 19 2013

An InterInstitute Consortium, built around an “open source” numerical Model,

In order to:

- *Create a community of Research groups sharing common interest in marine biogeochemistry and ecosystem modelling.*
- *Share and distribute reliable and consolidated (state of the art and continuously updated) tools and knowledge, ready to be used by the interested scientific community.*
- *Provide a common environment for testing description of marine biogeochemical processes.*
- *Making use of a common “language” (syntax and semantics)*
- *Maximise the information exchange among the community (...and no re-inventing the wheel!)*

BFM Release meeting, Bologna March 19 2013

...Not the first, and (hopefully) not the last



*Nucleus for European Modelling of the Ocean:
A general circulation ocean model.*



MEDSLIK-II Model: an ocean oil spill model




Consortium structured around the  experience

The BFM agreement

UNIBO, OGS, CMCC carried out joint/individual research to develop a marine Biogeochemical Model named 

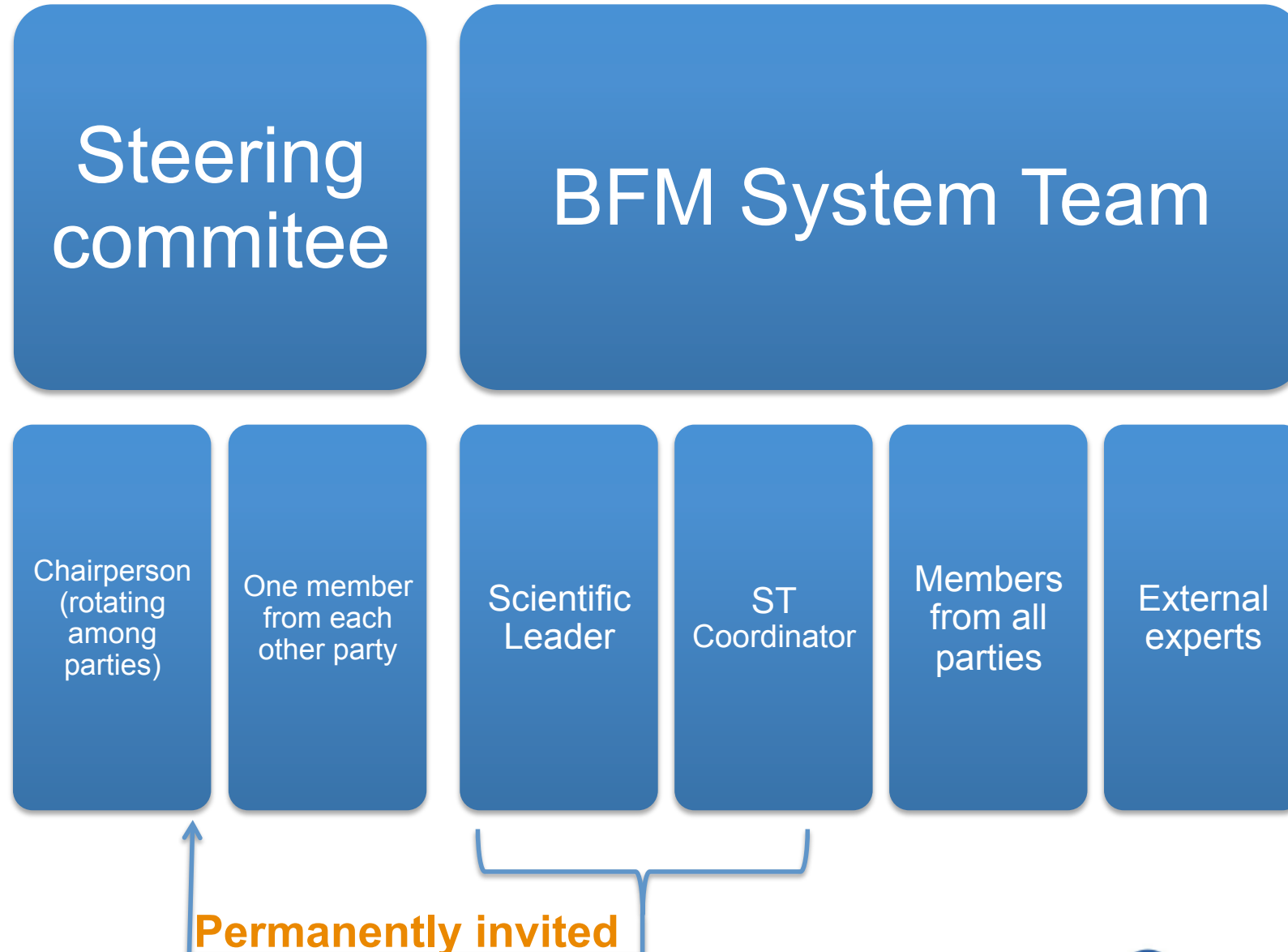
The three parties are interested to continue the work according to an agreed workplan.

The parties are willing to make available , and its further developments, to the scientific community for research and teaching, under appropriate license Terms, in order to obtain the best open dissemination and effective protection of IPR.

The agreement set out the structure, the governance and the work plan of the Consortium as well as dissemination and distribution of the  to third parties.

Each party contribute at least 12 PM of effort on a 3 year basis

Structure and Governance



Steering Committee

Steering committee

Chairperson
(rotating
among
parties)

One member
from each
other party

- Overall strategy
- Appoint ST Coord and Scientific Leader
- Define, review and update the workplan
- Allocate party Contrib's to WorkPLan
- Approve on annual basis membership
- Solve disputes among parties
- Defines modalities and conditions of new party entries.

System Team: Scientific Leader

BFM System Team

Scientific
Leader

ST
Coordinator


- **Supervise scientific activities in WP**
- **Propose (with ST Coord.) WP updates**
- **Propose ST Members**
- **Contributes to public outreach**
- **Seek funding opportunities.**

System Team: System Team Coordinator

BFM System Team

Scientific
Leader

ST
Coordinator

- Organise ST and User meetings.
- Coordinate scientific/technical discussions relative to WP implementation.
- Maintains the  code incorporating approved contributions/ Updates.
- Monitor WP Progresses.

Work Plan

Three years duration Updated and revised annually

<i>Name</i>	<i>Description</i>
A2.1 BFM Core (STANDALONE)	Zero-dimensional version with biological reactions
A2.2 BFM-POM (BFM_POM1D)	One-dimensional coupling with the Princeton Ocean Model
A2.3 BFM-POM (BFM_POM3D)	Three-dimensional coupling with the Princeton Ocean Model
A2.4 BFM-NEMO (BFM_NEMO)	Three-dimensional coupling with the NEMO ocean model
A2.5 BFM-OPATM (BFM_OPATM8_1)	Three-dimensional coupling with the ocean transport model based on OPA 8.1

Licenses

Version 3 of the GNU Public License (GPL) is used to grant Access rights and for Dissemination and Distribution.



Documentation is released under the Creative Common License.

Copyright (C) YEAR BFM System Team

This program is free software: you can redistribute it and/or modify it under the terms of the GNU General Public License as published by the Free Software Foundation, either version 3 of the License, or (at your option) any later version. This program is distributed in the hope that it will be useful, but WITHOUT ANY WARRANTY; without even the implied warranty of MERCHANTABILITY or FITNESS FOR A PARTICULAR PURPOSE. See the GNU General Public License for more details.

Publications and communications making use of  should provide Acknowledgement of “**use of the BFM System** (www.bfm.community.eu)”

Entry of a new party

A new party agrees to contribute resources to the WP

New party entry is effective after an unanimous vote of the SC

New parties may take part to WP discussion up to 6 months before the start of their Commitment.

New parties have the same access rights to Background and Foreground knowledge
As the pre-existing parties

New parties will have co-ownership of the code developed by pre.-existing parties
From the date of the agreement signature.